

Transfer Printed Plates

KEY

P	<i>Complete profile</i>
L	<i>Large</i>
S	<i>Small</i>
Context	<i>Context from which the material was recovered</i>
MOR II	<i>Site Code</i>
HMV	<i>Unique Kilmartin Museum acquisition number</i>

Photographs of complete vessels used for comparative purposes have been given identifiable letters beginning with 'A'.

(HMV 101) (Includes 2 shards from context 038: 5 from 006: 11 from 021: 2 from 059; 4 from 091; three from 002; 5 from 039 and 2 from 066)

Context	Shards	Form	Rim Diameters	Decoration	Illus No
G. 1	132	Plates	245mm	Grey transfer prints	101 A & b



One hundred and thirty two shards, with a large number conjoining, from at least nine (a-i) standard white earthenware meat and soup plates. All are decorated with grey transfer printed borders and central transfer prints (illus 101). The obverse of all plates has the printed backstamps "P.Co" and "Grecian" (illus 101b). "Grecian"



is a common late Victorian pattern produced in both lilac and grey by the Clyde Pottery, based in Greenock. The Clyde Pottery was formed after the bankruptcy of William Shirley in 1857, when it was taken over by a syndicate that, with a number of changes, ran it until 1904.

(H.M.V.108) (Includes 2 shards from context 108)

Context	Shards	Form	Rim Diameters	Decoration	Illus No
G. 1	9	Plate	236mm	Grey transfer print	108a & b



Nine shards, six conjoining, from the rim of a standard white earthenware plate decorated with a grey transfer printed border. The plate has both an impressed bell and a backstamp "BRACELET" and "J & M.P.B &", both marks for the Glasgow pottery of "J & M.P. Bell & Co".



(H.M.V. 109)

Context	Shards	Form	Rim Diameters	Decoration	Illus No
G. 1	5	Plate	212mm	Printed	109



Five standard white earthenware shards, all conjoining, form a large fragment of a moulded plate decorated with a floral print (Lithograph) in a range of pink and tan colours.

(H.M.V. 110)

Context	Shards	Form	Rim Diameters	Decoration	Illus No
G. 1	23	Plates	229mm	Transfer Printed	110 a & b



Twenty three standard white earthenware shards of which twenty conjoin to form large fragments of two plates. Both are decorated with central grey transfer prints of birds, and thin grey borders. Both plates have simple backstamps "CORRIE" see illus (110b) below.



(H.M.V. 111)

Context	Shards	Form	Rim Diameters	Decoration	Illus No
G. 1	31	Plates	264mm	Transfer Printed	111 a & b



Thirty one shards from at least two standard white earthenware plates decorated with blue transfer prints of "Italian Lakes". Nineteen shards conjoin to form an almost complete example that has, on the obverse, the blue and white backstamp of the Glasgow pottery "J & M.P. Bell" and the pattern name (illus 111b) below



(HMV. 112) (Includes 2 shards from context 021)

Context	Shards	Form	Rim Diameters	Decoration	Illus No
G. 1	8	Plates	178mm	Transfer Printed	112 a & b



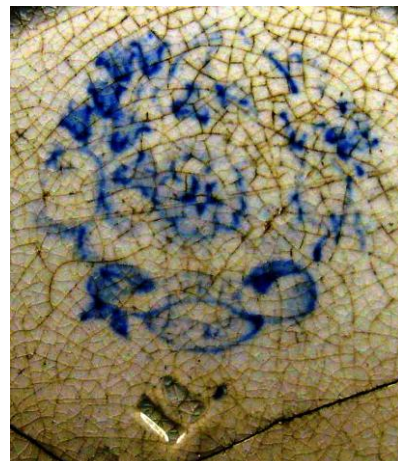
Eight standard white earthenware shards conjoining to form a large fragment of a plate decorated with a pale brown transfer print

(HMV. 113) (Includes 3 shards from context 021 and one from 002)

Context	Shards	Form	Rim Diameters	Decoration	Illus No
G. 1	18	Plates	175mm	Transfer Printed	113

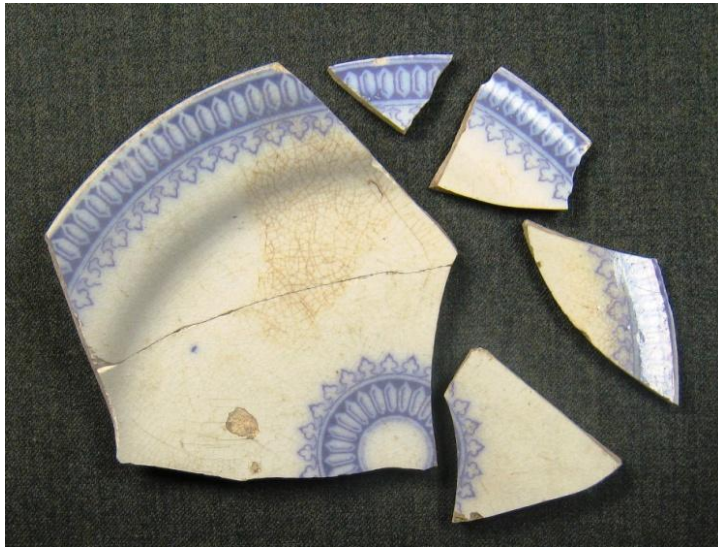


Eighteen shards from a bone china plate decorated with light blue transfer prints "Syria". The obverse of the plate has an indistinct "B. P. Co Ld", the Britannia pottery of Glasgow backstamp, which I have enhanced.



(HMV. 114)

Context	Shards	Form	Rim Diameters	Decoration	Illus No
068	6	Plates	164mm	Transfer Printed	114 A & B



Six standard white earthenware shards, with two, and two, conjoining, from a small plate decorated with a mauve transfer printed border and centre design. On Part of a transfer printed backstamp showing an (M-- / C-) (illus 114b), on its obverse. This is almost certainly part of an unrecorded Clyde pottery pattern.



(HMV. 115) (One shard from context 006)

Context	Shards	Form	Rim Diameters	Decoration	Illus No
G. 1	8	Plates		Transfer Printed	115



Eight standard white earthenware shards, with five conjoining, from a deep plate decorated with a blue and white transfer print known as "Oriental". A complete blue and white backstamp with "ORIENTAL" "L & Co", for the Glasgow Company of "Lockhart and Co 1876-98" is on the obverse.

(H.M.V. 116) (One shard from context 021)

Context	Shards	Form	Rim Diameters	Decoration	Illus No
G. 1	13	Plates	164mm	Transfer Printed	116



Thirteen shards, of which seven conjoin, from a small plate decorated with a blue transfer print of the “Asiatic Pheasant” pattern. This very common design was produced by dozens of different potteries.

(H.M.V. 117)

Context	Shards	Form	Rim Diameters	Decoration	Illus No
G. 1	8	Plates	164mm	Transfer Printed	117



Eight standard white earthenware shards, of which four conjoin, from a plate, or plates, decorated with blue transfer prints. I am told that this is the “British River” pattern, a product of the Clyde Pottery.

(H.M.V. 118)

Context	Shards	Form	Rim Diameters	Decoration	Illus No
G. 1	54	Plates		Transfer Printed	118



Fifty four standard white earthenware shards from the rims of at least two plates, both decorated with the same blue transfer print.

(H.M.V. 139) (Includes 3 shards from context 031; 1 from 078: 2 from 006)

Context	Shards	Form	Rim Diameters	Decoration	Illus No
G. 1	12	Plates		Transfer Printed	139 a & b



Twelve, thick, standard white earthenware shards from, most likely, two plates decorated with blue and white "Grecian" transfer prints. A small blue scroll backstamp "GRECIAN" "J. T" (illus 138b) is on the reverse of two conjoining shards. This is the mark of John Thomson of the Annfield pottery in Glasgow.

