

Transfer Printed Cups & Saucers

KEY

P	<i>Complete profile</i>
L	<i>Large</i>
S	<i>Small</i>
Context	<i>Context or contexts from which the ceramic material was recovered</i>
HMV.	<i>Unique High Morlaggan vessel number</i>

Photographs of complete vessels used for comparative purposes have been given identifiable letters beginning with 'A'.

(HMV. 30) (Includes 2 shards from context 190)

Context	Shards	Form	C - Dia -- Height & S - Dia	Pattern name	Illus No
G.1	51	Cup & Saucer	85mm – 72mm & 147mm	? - Blossom	30 a, b & c



Fifty one standard white earthenware shards from a minimum of two cups and three saucers all decorated with light grey transfer prints. These are almost certainly from a tea service comprising cups and saucers, but no plates. On the reverse of two saucers are fragments of a grey transfer print with the name '**BLOSSOM**' (illus 30b) in a garter belt. Two saucers have been impressed with a small star, 7mm in diameter (illus 30c). This could be "Hawthorn Blossom" a pattern produced by Clyde Pottery Co.



(HMV. 31)

Context	Shards	Form	C - Dia -- Height & S - Dia	Pattern name	Illus No
G.1	50	Cup & Saucer	85mm – 87mm & 142mm	Apsley Plants	31 a, b & c



Fifty standard white earthenware shards from a minimum of two cups and four saucers all decorated with light grey transfer prints. These are almost certainly from a tea service comprising cups and saucers, but no plates. On the reverse of all the saucers is a grey printed backstamp with 'J & M P B Bell & Co' below the pattern name 'APSLEY PLANTS' (illus 32b). The saucers also have the usual Bell's pottery impressed mark of a bell, or what could be an impressed cross (illus 32c).



(HNV. 32)

Context	Shards	Form	C - Dia -- Height & S - Dia	Pattern name	Illus No
G.1	56	Cup & Saucer	85mm – 87mm & 142mm	Shield	32 a & b



Fifty six standard white earthenware shards from a minimum of two cups and three saucers, all decorated with grey transfer prints. These are almost certainly from a tea service comprising cups and saucers, but no plates. Printed in grey on the reverse of the saucers is '**SHEILD / CLYDE POTTERY**' and on one saucer, what looks like an 'O' and on another 'O°' (illus 32b).

(H.M.V. 33) (Includes two shards from context 120)

Context	Shards	Form	C - Dia -- Height & S - Dia	Pattern name	Illus No
G.1	89	Cup & Saucer	92mm – 70mm & 145mm	?	33 a & b



Eighty nine standard white earthenware shards from a minimum of four moulded cups and four moulded saucers, all decorated with Japanese style, Aesthetic period, light



blue transfer prints. These are almost certainly from a tea service comprising cups and saucers, but no plates. Two saucers have a small blue '8' stamped on the obverse. The cups have two small transfer prints on the interior (illus33b)

(HMV. 34)

Context	Shards	Form	C - Dia -- Height & S - Dia	Pattern name	Illus No
G.1	81	Cup & Saucer	85mm – 87mm & 142mm	Derby	34 a & b



Eighty one standard white earthenware shards from a minimum of four cups and three saucers all decorated with blue transfer prints. These are almost certainly from a tea service comprising cups and saucers, but no plates. One of the saucers has a blue backstamp of a garter belt with the pattern name 'DERBY' and the maker's initials 'A. B & Co' (illus 34b). This is Arthur Balfour who ran the North British pottery in Glasgow from

1875 until 1904 when it was purchased by the Caledonian Railway Company. "Derby" is hitherto an unrecorded Balfour pattern.

(H.M.V. 35)

Context	Shards	Form	C - Dia -- Height & S - Dia	Pattern name	Illus No
G.1	36	Cup & Saucer	79mm - ? - 147mm	?	35 a & b



Thirty six standard white earthenware shards from a minimum of one cup and three saucers, all decorated with a blue transfer printed border. These are almost certainly from a tea service comprising cups and saucers but no plates. Two of the saucers have traces of an impressed mark and part of a blue '**J & M P B Bell & Co**' backstamp; the pattern name is missing.

(HMV. 36) (Includes 18 shards from context 021; 8 from 006; 7 from 038 & 7 from 059)

Context	Shards	Form	C - Dia -- Height & S - Dia	Pattern name	Illus No
G.1	173	Cup & Saucer	82mm - 64mm - 145mm	?	36 a, b & c



One hundred and seventy three standard white earthenware shards with a large number conjoining to form a minimum of six saucers and four cups, all decorated with black transfer floral prints and red clobbering. All the vessels, apart from one cup and one saucer, have a black backstamp with a registered design, and “Till & Son” printed below. Many of the vessels have the pattern number “549/1” painted in red. Cups have what look like an impressed small “B 9”. The class IV backstamp (illus 36b), tells us that this design was registered in March 1869, but common patterns often had a



longer life span. Interestingly one of the cups has a different handle (illus 35c), which could mean that the set was a second or the cup was a replacement?

(H.M.V. 37) (Includes 4 shards from cont 021; 2 from 006; 2 from 038; 5 from 059 & 1 from 078)

Context	Shards	Form	C - Dia -- Height & S - Dia	Pattern name	Illus No
G.1	55	Cup & Saucer	78mm ? ?	?	37



Fifty five shards of which only a few conjoin from cups and saucers, in what seems to be both a bone china and porcelainous body. All have been decorated with similar floral dark brown transfer prints which have been clobbered in pink. Some of the bone china shards became stained in the soil; the porcelainous shards remain white.

(H.M.V. 38) (Includes 4 shards from context 059; 1 from 078 and 1 from 021)

Context	Shards	Form	C - Dia -- Height & S - Dia	Pattern name	Illus No
G.1	32	Cup & Saucer	? ? 139mm	?	38



Thirty two bone china shards, a few conjoining to form fragments of , most probably, at least one cup and two saucers. The decoration comprises

simple, transfer printed, swags clobbered with red, green, and yellow enamels. The rims have been painted with a fine yellow band.

(H.M.V. 39) (Includes 6 shards from context 006)

Context	Shards	Form	C - Dia -- Height & S - Dia	Pattern name	Illus No
G.1	36	Cup & Saucer	? ? 139mm	Not sure	39a & b



Thirty six standard white earthenware shards, with seven, four, two, and two, conjoining, from a minimum of two saucers and one cup, decorated with grey transfer prints in a pattern which, if my memory serves me correctly, is called "tapesty" But this does not fit this fragment which has a



backstamp ending "—ERY" (illus 39b).

(H.M.V. 40) (Includes 8 shards from context 078)

Context	Shards	Form	C - Dia -- Height & S - Dia	Pattern name	Illus No
G1	16	Cup & Saucer			40



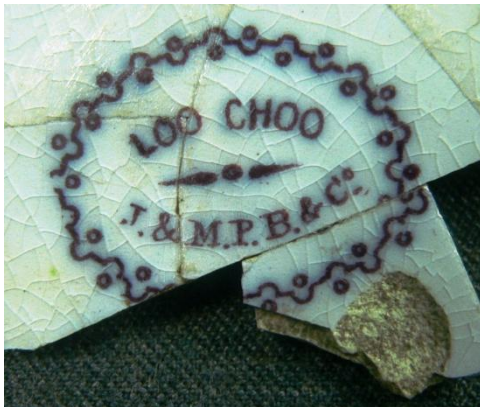
Sixteen standard white earthenware shards, with several conjoining, from a minimum of two cups and a saucer, all decorated with pale blue transfer prints resembling lace.

(HMV. 41) (Includes 3 shards from context 078 : 5 from 021 and 1 from 006)

Context	Shards	Form	C - Dia -- Height & S - Dia	Pattern name	Illus No
G1	19	Saucer	? ? 000mm	Loo Choo	41 a & b



Nineteen standard white earthenware shards, with nine, four, and two, conjoining, to form fragments of, probably, two saucers. Decorated with plum coloured transfer prints in a pattern called "Loo Choo", produced by J & M P B Bell of Glasgow. See (illus 41b).



(HMV. 46)

Context	Shards	Form	C - Dia -- Height & S - Dia	Pattern name	Illus No
G1	12	Saucer			46



Twelve standard white earthenware shards, with a few conjoining, from a saucer, or saucers, decorated with a transfer printed blue border under a light green wash.

(HMV. 47)

Context	Shards	Form	Cup Base Dia -- Saucer Dia	Pattern name	Illus No
G1	14	Cup & Saucer	46mm -		47



Fourteen standard white earthenware shards with three, and three, conjoining, from a minimum of one moulded cup and one saucer. Decorated with a brown transfer printed borders, and a small print inside the cup.

(HMV. 104) (Includes one shard from context G. 1)

Context	Shards	Form	Cup Dai - Saucer Dia	Pattern name	Illus No
021	6	Cup & Saucer		Oak Leaves	104



Six standard white earthenware shards from a minimum of one cup and one saucer, decorated with lilac transfer prints of leaves. One shard has a lilac backstamp with "OAK LE---- / C. P Co", for the Clyde Pottery Company of Greenock.

(HMV. 105) (Includes two shards from context 006)

Context	Shards	Form	Cup Dai - Saucer Dia	Pattern name	Illus No
021	9	Cup & Saucer		Oak Leaves	105



Nine standard white earthenware shards from a minimum of one cup and one saucer decorated with lilac transfer prints.

(HMV. 157) (Includes one shard from context 006 and one from 005)

Context	Shards	Form	Cup Dai - Saucer Dia	Pattern name	Illus No
021	8	Cup & Saucer		?	157



Eight standard white earthenware shards from a cup and saucer decorated with a dark brown transfer print. Shards in this unnamed design were recovered during excavations carried out on the site of the Verreville pottery in Glasgow (Haggarty, G 2007 'The Verreville pottery Glasgow: Ceramic Resource Disk' *The Northern Ceramic Society Journal* 23 (2006-7) Folder transfer printed, Word file 105, illus 529 & 30).

(HMV. 158) (Includes two shard from context 006: four from G 1)

Context	Shards	Form	Cup Dai - Saucer Dia	Pattern name	Illus No
031	17	Cup & Saucer		?	158



Seventeen standard white earthenware shards, with a few conjoining, from a cup and saucer decorated with transfer printing in an unusual shade of puce.