

Child's Mugs & Plates

KEY

P	<i>Complete profile</i>
L	<i>Large</i>
S	<i>Small</i>
Context	<i>Context from which the material was recovered</i>
MOR II	<i>Site Code</i>
HMV	<i>Unique Kilmartin Museum acquisition number</i>

Photographs of complete vessels used for comparative purposes have been given identifiable letters beginning with 'A'.

(HMV. 44)

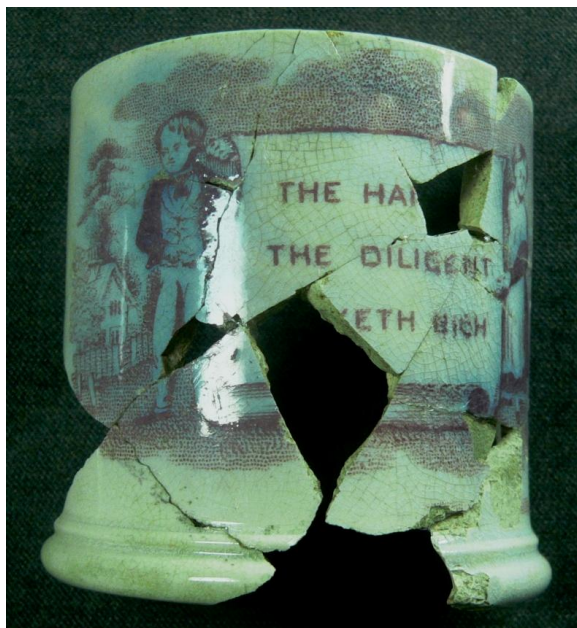
Context	Shards	Form	Rim Dia - Base Dia - Height	Decoration	Illus No
G. 1	7	Mug. S	71mm - 71mm - 70mm	Tran/Printed	44



Seven standard white earthenware shards, five conjoining to form a fragment of a child's mug decorated with a steel blue transfer print with the name "Deer Stalking" above its base. This pattern was produced by J & M P Bell of Glasgow.

(H MV. 45) (Includes two shards from context 006)

Context	Shards	Form	Rim Dia - Base Dia - Height	Decoration	Illus No
G. 1	14	Mug. S	70mm – 75mm – 72mm	Tran/Printed	45



Fourteen standard white earthenware shards conjoining to form a fragment of a child's mug, decorated with a plum coloured transfer print of two children holding up a banner with "THE HA---- / THE DILIGENT / ---ETH RICH". A number of child's mugs and child's plates with this transfer is known, but with different mottoes (Riley 1991, 249 figs 990-1-3 & 4). This is most likely a Glasgow product, having similarities to child's mugs published from the Verreville pottery, also in Glasgow (Haggarty 2007, word file 15), it open the door to the possible identification of a new group of Scottish child's mugs.

(H MV 119)

Context	Shards	Form	Rim Diameters	Decoration	Illus No
G. 1	7	Plate. S	139mm	Transfer printed	119



Seven standard white earthenware shards conjoined to form almost half of a child's moulded plate decorated with a blue transfer print. Approximately half of the printed text survives "LOVE NOT -- / LEST -- / COME TO -- / OPEN T -- / AND TH -- / BE SATISIFI[ED] --". A number of plates with this moulded border have been identified as deriving from the Bo'ness pottery.

(HNV 120)

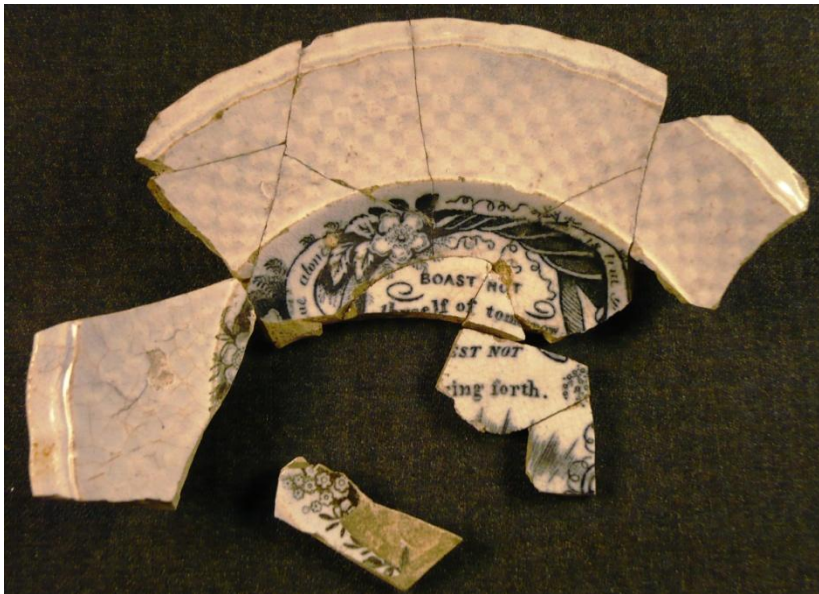
Context	Shards	Form	Rim Diameters	Decoration	Illus No
G. 1	7	Plate. S	138mm	Transfer printing	120



Seven standard white earthenware shards conjoined to form almost half of a child's moulded plate, decorated with a brown transfer print with only a small part surviving; this includes the word "DOG". A number of plates with this moulded border have been identified as deriving from the Bo'ness pottery, including examples decorated with a dog, a duck, etc.

(HNV 121) (Includes one shard from context 006 and one from 038)

Context	Shards	Form	Rim Diameters	Decoration	Illus No
G. 1	13	Plate	135mm	Transfer Printed	121



Thirteen standard white earthenware shards with twelve conjoined to form a fragment of a child's moulded plate decorated with a grey transfer print. Part of the printed text survives
 "BOAST NOT /
 thyself of tomorrow /
 - - - st not /-- ring
 forth".

(HNV 122)

Context	Shards	Form	Rim Diameters	Decoration	Illus No
G. 1	6	Plate	175mm	Hand Painting	122



Six standard white earthenware shards, with two, and two, conjoining, from a child's moulded plate decorated with hand painting. The only parallel for this border known to the author is from work carried out in Prestonpans (Haggarty, 2010, word file 002). Two extant examples with this

border were purchased recently by a Scottish collector. See illustration (A) below.



(HMV 123) (Includes one shards from context 006)

Context	Shards	Form	Rim Diameters	Decoration	Illus No
G. 1	8	Plate			123



Eight standard white earthenware rim shards, with seven conjoini moulded plate. A large number of shards with this rope and flower moulded border were recovered from excavations at the site of the Verreville pottery in Glasgow (Haggarty, G 2007 'The Verreville pottery Glasgow: Ceramic Resource Disk' *The*

Northern Ceramic Society Journal 23, word file 16; Kelly, H E 2005, Shards from Verreville Pottery' *Scottish Pottery Historical Review* Vol 23, 44). A large number of extant child's plates with this border have since been identified, many of which are now in the collection of the National Museums Scotland.

(HMV 124)

Context	Shards	Form	Rim Diameters	Decoration	Illus No
G. 1	10	Plate		Transfer Printed	124



Ten standard white earthenware shards with two, three, two, and two, conjoining from a child's plate decorated with transfer printing "--PPRE - / FIRST - ES --". A large number of shards with this moulded flower border, but with a rather more raised rim have been recovered from excavations at the site of the Verreville pottery in Glasgow.

(HMV 125)

Context	Shards	Form	Rim Diameters	Decoration	Illus No
G. 1	4	Plate		Painted	125



Four standard white earthenware shards, with two conjoining, from the rim of a child's moulded plate hand painted in yellow and green

(HMV 126)

Context	Shards	Form	Rim Diameters	Decoration	Illus No
G. 1	6	Plates		Transfer Printed	126



Six standard white earthenware shards from two different child's plates, five of which conjoin from a child's plate with a brown transfer print of children fishing, perhaps reading "RURAL. SPORTS" or "SPORTS".

The sixth shard is from a child's plate decorated with a blue transfer print of a figure with an apron. These shards may be associated with the rim shards shown above (illus 123 and 125).